



# SecurityGateway

for Email Servers

## Key Features

- Accurate Detection** - With multiple analysis tools for separating threats from legitimate email, SecurityGateway leverages the best proven antispam, antivirus, antiphishing, and antispoofing technologies to produce a 99% spam blocking rate and achieve nearly zero false-positive results.
- Data Leak Prevention** - In addition to inbound mail traffic filtering, SecurityGateway also filters outbound email. An easy-to-use interface allows policies to be created which detect and prevent the unauthorized transmission of sensitive information outside of your network.
- Powerful Filtering Engine For Email Servers** - SecurityGateway's powerful filtering engine is based upon the industry standard Sieve mail filtering language. An administrator may extend its functionality by using their own Sieve scripts.
- Defense Layer Customization** - A unique SecurityGateway control method that allows email administrators the flexibility to prioritize the order of operations a specific security rule will execute when analyzing incoming or outgoing email traffic.
- Comprehensive Reporting** - Identify email traffic patterns and potential problems with SecurityGateway's comprehensive reporting. All reports support point-and-click drill-down targeting allowing further analysis to be performed.

## Layered Defenses and Flexible Configuration Improve Server Performance and Security

SecurityGateway for Email Servers combines nearly two decades of email security expertise with proven security technologies to protect message traffic from malicious attacks, message tampering and email address identity theft. Using multiple security methods, SecurityGateway assures the accurate delivery of legitimate email while minimizing the potential of false positives.

SecurityGateway incorporates multiple AV engines and proactive Outbreak Protection technology combined with additional signature recognition and heuristic analysis to detect viruses, spam, phishing, spyware and other types of unwanted and harmful email.

Outbound data leak prevention, that uses the industry standard Sieve filter language, allows administrators the flexibility to manage the flow of outbound email to prevent the unauthorized sending of messages and attachments.

**Your personal Spam Quarantine Report**  
 This email contains a list of messages which have been quarantined by SecurityGateway for Exchange/SMTP.

- To move an email to your Inbox, click the "Release" link.
- To move an email to your Inbox and add the sender to your whitelist, click the "Always Allow" link.
- To delete the email and add the sender to your blacklist, click the "Blacklist" link.
- To delete all of the emails in your quarantine, click the "Delete All Messages" link at the bottom of this report.

This report has been generated for the following email address: user02@ssllock.com ([login](#))  
 You have 13 message(s) in your quarantine folder.  
 Messages older than 90 days will automatically be removed.

Received	From	Subject	Actions
2014-01-17 16:33		Check out these exclusive walk-in tub deals	[ <a href="#">Release</a>   <a href="#">Always Allow</a>   <a href="#">Blacklist</a> ]
2013-12-20 00:37		Complete the Christmas Survey and Claim Your Disney Store Gift ...	[ <a href="#">Release</a>   <a href="#">Always Allow</a>   <a href="#">Blacklist</a> ]
2013-12-19 19:07		\$19.99 Gifts for Everyone on Your List	[ <a href="#">Release</a>   <a href="#">Always Allow</a>   <a href="#">Blacklist</a> ]
2013-12-19 17:16		Ornaments for Everyone on Your List	[ <a href="#">Release</a>   <a href="#">Always Allow</a>   <a href="#">Blacklist</a> ]
2013-12-19 13:42		Obama Waives Refi. As a Homeowner You Can Now Save Thousands a ...	[ <a href="#">Release</a>   <a href="#">Always Allow</a>   <a href="#">Blacklist</a> ]
2013-12-19 13:31		Learn Our History is giving away its latest DVD	[ <a href="#">Release</a>   <a href="#">Always Allow</a>   <a href="#">Blacklist</a> ]
2013-12-18 21:39		Have You Seen This Year's Holiday Disney Ornaments?	[ <a href="#">Release</a>   <a href="#">Always Allow</a>   <a href="#">Blacklist</a> ]
2013-12-18 17:12		Learn Our History is giving away its latest DVD	[ <a href="#">Release</a>   <a href="#">Always Allow</a>   <a href="#">Blacklist</a> ]
2013-12-18 17:12		#222e Beginning to Look A Lot Like Christmas with	[ <a href="#">Release</a>   <a href="#">Always Allow</a>   <a href="#">Blacklist</a> ]

User Control: A quarantine log email sent to users allows the release of messages or whitelisting of email without the need to burden the IT Administrator.

# SecurityGateway Configuration and Features

## Key Benefits

- **Easy Administration.** Intuitive, task oriented interface allows already overworked administrators to perform common actions with minimal effort. Administrative responsibilities can be delegated to a domain administrator. End users are empowered to determine the fate of a message without the need to contact the administrator.
- **Proven Threat Detection.** Multiple security tests, including multiple antivirus plug-ins, deliver enterprise-class protection against hidden threats, incoming and outgoing.
- **Investment Protection.** Receive free upgrades to the latest product versions for the duration of the subscription term.

## System Requirements

- Microsoft Windows XP/2003/ Vista/2008/7/2012/8 (including 64-bit versions) (Windows server operating system recommended)
- CPU 800MHz or higher (dual core CPU 2.4GHz or higher recommended)
- 512 MB RAM (2 GB recommended)
- Network Interface Card
- TCP/IP network protocol installed
- NTFS volume with minimum of 500MB free space
- MSIE 6.0, FireFox 1.5, Opera 8.5, Safari 3.0 (or later)
- Flash Player 8.0 or above for graphical reports

## Security Options

### AntiSpam

- Heuristic and Bayesian
- DNS Blacklists
- URI Blacklists
- Greylisting
- Message Certification
- Backscatter Protection
- Message Scoring
- Outbreak Protection via real-time pattern analysis

### AntiVirus

- Automatic Pattern Updates
- Multiple AV engines

### Anti-Spoofing

- Reverse Lookups
- DKIM Signing and Verification
- SPF
- SenderID
- Call Back Verify

### AntiAbuse

- Relay Control
- SMTP Authentication
- IP Shielding
- Dynamic Screening
- Tarpping
- Bandwidth Throttling

### Filtering

- Message Content Filter
- Preset File Types

### Blacklists

- Addresses
- Hosts
- IPs
- Blacklist Actions

### Whitelists

- Addresses
- Hosts
- IPs

### Policy Enforcement

- Sieve Rules

## Configuration Options

### Domains and Users

- Automatic Domain and User Creation/Maintenance
- Multiple Email Domains
- Domain Administrators
- Per-User Options

### Mail Handling

- Multi-Domains Per Mail Server
- Custom Mail Delivery Options

### Quarantine Options

- Domain Level for Admins
- User-Level Access

### Database Maintenance

- Backup & Restore

## Logs

### Message Logging

- Global Message Logs
- Domain Message Logs
- Quarantined Messages

### Historical Logs

- Configurable Log Retention
- Snapshot System Log
- Snapshot Inbound Log
- Snapshot Outbound Log
- Snapshot HTTP Log

## Reports

### Summary

- Extensive Filter Options
- Real-Time Charting
- Junk Email Breakdown
- Bandwidth Utilization

### Inbound Email

- Messages Processed
- Top Recipients
- Top Recipients by Size

### Outbound Email

- Messages Processed
- Top Senders
- Top Senders by Size

### AntiSpam

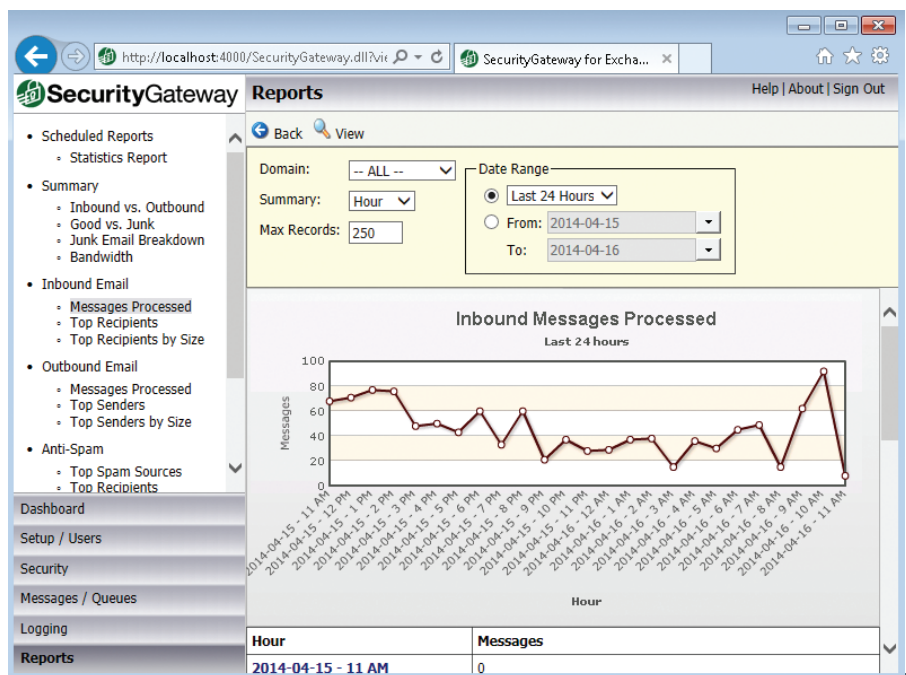
- Top Senders by Domain
- Top Recipients

### AntiVirus

- Inbound Caught
- Inbound by Name
- Outbound Caught
- Outbound by Name

## Private Account Options

- Processing Settings
- Whitelists and Blacklists
- Message Logs
- Quarantine Management



Separate reports for inbound and outbound emails.