

Key Features of WorldClient (MDaemon's Web-Based Email)

WorldClient provides easy access to your inbox, calendar, contacts, tasks, documents and notes from any location that has an Internet connection. Provided free with MDAemon, the web-based email client sends and receives messages from any connected computer, smartphone, or tablet using any modern web browser and runs on Windows, Mac OS X, and Linux.

[Learn more by visiting our WorldClient webpage](#)

Display Options

Display options for WorldClient include selection from thirty languages and five design themes. [Figure 1-1]



Figure 1-1

Message Sorting

Messages can be sorted by sender, subject, date, size, or follow-up flag status.

Follow-Up Flags

Follow-up flags help you keep track of important messages. [Figure 1-2]

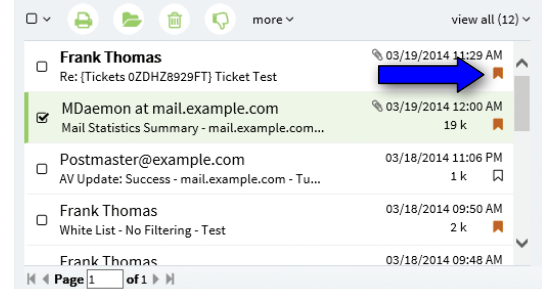


Figure 1-2

One-Step Drag and Drop Email Attachments

This feature allows you to select multiple files and attach them to a message via simple drag & drop. [Figure 1-3]

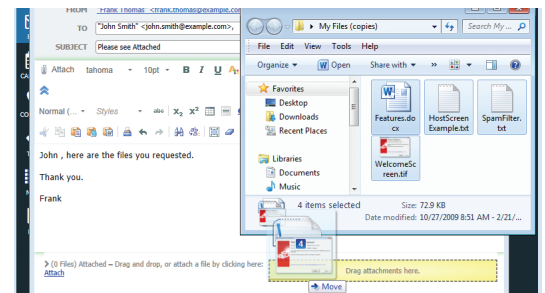


Figure 1-3

Marking Messages as Spam

Messages can easily be tagged as spam or non-spam. [Figure 1-4]

Message Preview

The message preview pane can be repositioned or hidden. [Figure 1-5]

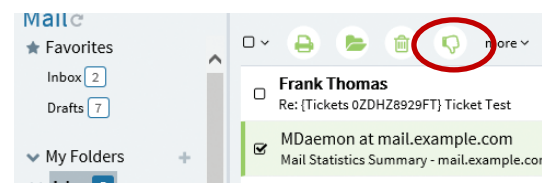


Figure 1-4

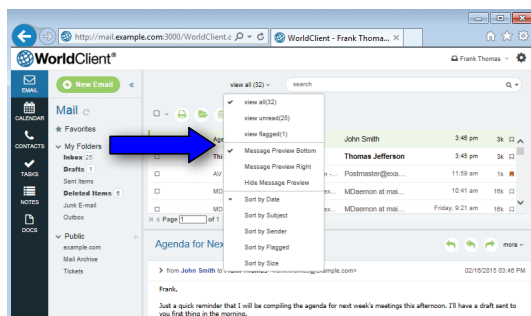


Figure 1-5

Groupware Management

Manage email, contacts, calendar, tasks, and notes directly from WorldClient. [Figure 2-1]

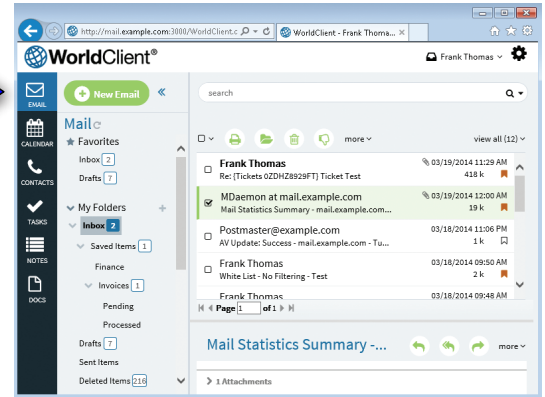


Figure 2-1

Share and Manage Documents

Document sharing allows users to provide a central repository for documents to be accessed and shared by designated users.

Data and Folders

Calendar and Contact data can be imported and exported. Folders can be created, shared, renamed, or deleted. Sub-folders can be shared via a simple check box. [Figure 2-2]

Personalized Views

Personalize your inbox layout by enabling, disabling, and rearranging columns. Use your mouse to drag columns to their new locations.

Filters

Highly customizable filters provide flexible mail sorting options. [Figure 2-3]

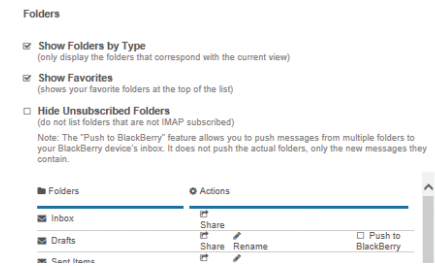


Figure 2-2

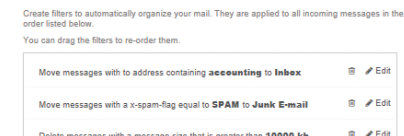


Figure 2-3

Spell-Check

On-demand and automatic spell-check options.

Composing

Messages can be written in HTML or plain-text. HTML Compose enables rich-text formatting.

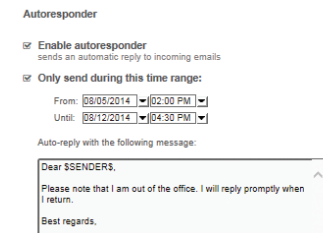


Figure 2-4

Out-of-Office

Enable an auto-responder and configure start and end dates. [Figure 2-4]

Forwarding

Provides easy access to mail forwarding options.

Integrated Closed Instant Messaging

Allows you to view your buddy list and chat with your WorldClient Instant Messenger buddies online from anywhere. [Figure 2-5]

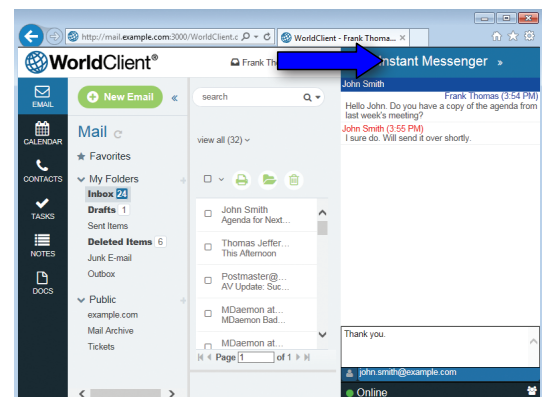


Figure 2-5

Message Attachment Handling

In the WorldClient and LookOut themes, when users compose an email and click the “attach” button, users can attach documents from a sortable and searchable list of all documents that the user has access to through WorldClient. [Figure 3-1]

Saving Email Messages

In all WorldClient themes, users can save the source of the selected message as an .eml file to the user’s local machine. [Figure 3-2]



Attachment Printing

Users can choose whether to print message attachments “Always”, “Never”, or “Decide on Print.” [Figure 3-3]

Email Encryption with Virtru

When using the WorldClient theme, users can now encrypt email messages and attachments using Virtru. [Figure 3-4]

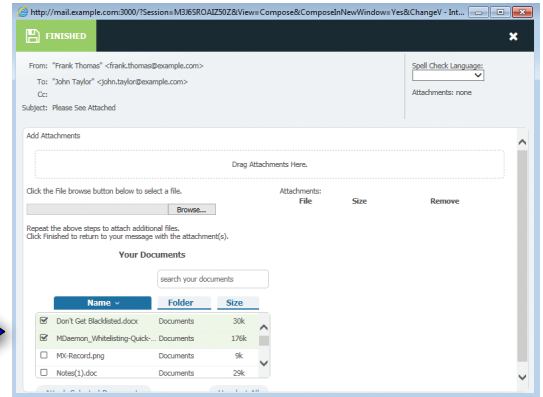


Figure 3-1

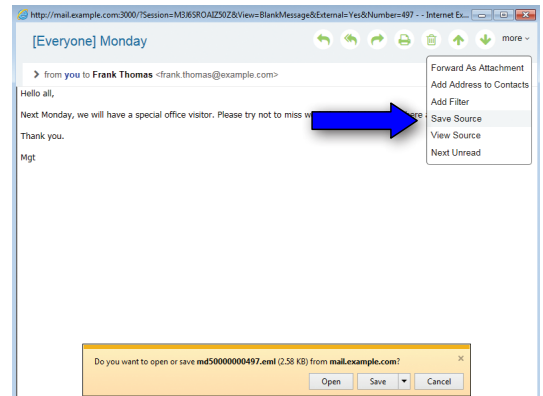


Figure 3-2

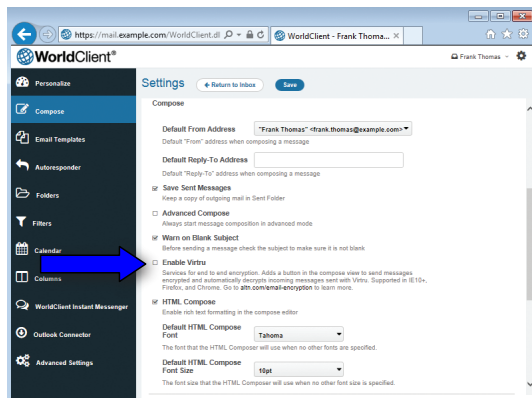


Figure 3-4

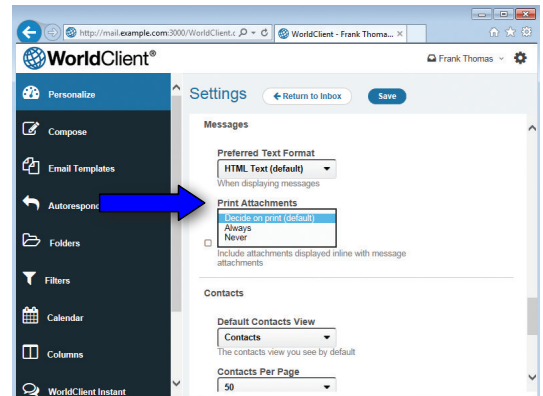


Figure 3-3