

MDaemon 15 New Features

Like all MDAemon releases, the developers at Alt-N continue to add new customer requested features and enhancements. Here is a quick overview of just some of the features end users and IT administrators will find helpful. A more comprehensive list of all new features and enhancements can be viewed in the [MDaemon Release Notes](#).

IPv6 Support

MDaemon now supports IPv6. Some benefits of IPv6 include more efficient routing, simplified network configuration, and additional security. Outbound SMTP, POP, and IMAP connections over IPv6 will take precedence over IPv4 whenever possible. IPv6 addresses can be specified for each domain.

[Figure 1-1]

Improved User Interface (UI)

The user interface has been improved in several ways, including:

- Updated ACL (Access Control List) editor for customizing access rights for public & shared folders.
- The Gateways top-level menu has been relocated to the new Gateway Domain Manager found at **Setup | Gateway Manager**.
- The Lists top-level menu has been relocated to the new Mailing List Manager found at **Setup | Mailing List Manager**.

Improved Account Hijack Detection

Account Hijack Detection helps prevent unauthorized access to an account when its logon credentials have been compromised. For MDAemon 15, Account Hijack Detection has been improved. Now, you can set different message and timing thresholds depending on the source IP of the incoming connection. You can also set separate limits for connections from reserved IPs, local domain IPs, and all other IPs. [Figure 1-2]

Email Encryption

Customers wishing to send and receive email and attachments using encryption technology can enable this feature in the WorldClient theme of MDAemon's web mail, WorldClient. Enabling the third-party feature from Virtru can be done within the "Compose" section of WorldClient's "Options" settings. Once the service is established, it allows users to send and receive email and attachments between themselves and intended recipients.

[Figure 1-3]

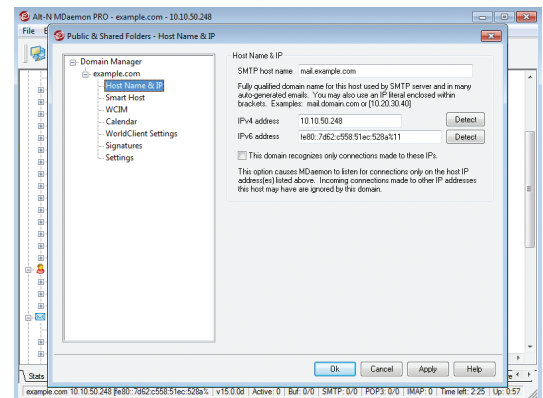


Figure 1-1

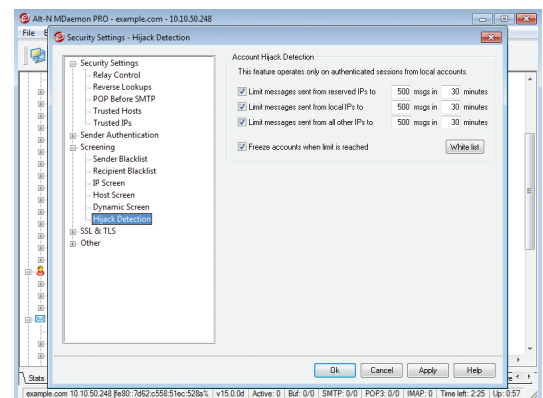


Figure 1-2

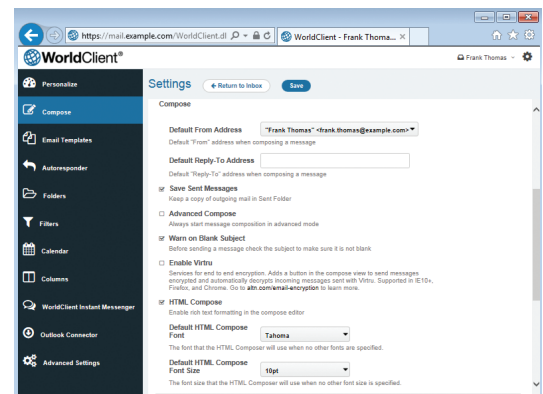


Figure 1-3

64-Bit Support

MDaemon is now available in 32-bit and 64-bit versions. The 64-bit version of MDAemon can handle a higher number of active sessions before running out of memory. This is beneficial in high-traffic environments where many clients are accessing and sending email simultaneously.

Dynamic Screening Improvements

Dynamic Screening is a security feature that can block a connection from an IP if it connects too often in a given timeframe, or if a message contains too many invalid recipient addresses. A new Dynamic Screening option has been added which lets you prevent IPs from being blocked due to multiple POP or IMAP authentication failures if each of the failures uses the same password. This prevents a situation in which unattended devices get blocked due to not yet being configured with the new password. [Figure 2-1]

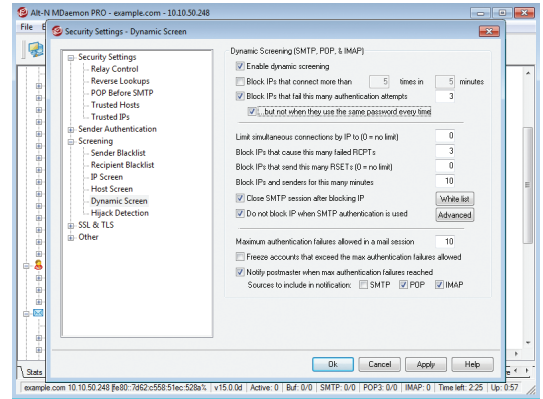


Figure 2-1

Improved SSL Behavior

An option has been added that allows connections that fail SSL negotiation to retry connecting without SSL for up to one hour. [Figure 2-2]

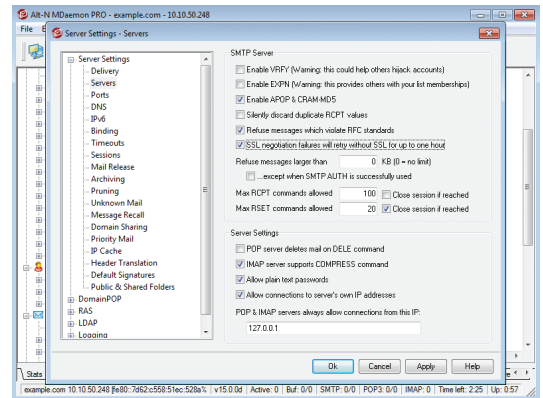


Figure 2-2

Remote Administration Session Management

Global administrators can now view a list of active sessions via Remote Administration. This allows administrators to see all current connection activity, including POP, IMAP, SMTP, ActiveSync, and WorldClient sessions. Sessions can also be selected and disconnected by the administrator.

[Figure 2-3]

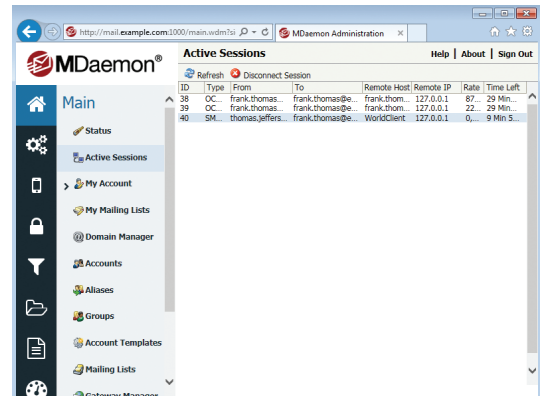


Figure 2-3

Weak Password Report

New password controls allow administrators to maintain strong password policies, and to monitor weak password usage. Administrators can now generate and email a weak password report to any designated email address. The recipient of that report can then notify those users to change their passwords as needed. [Figure 2-4]

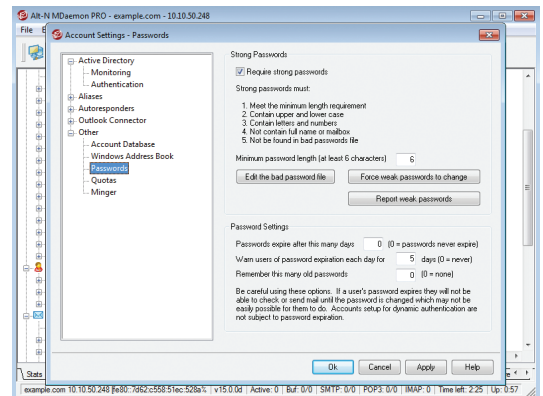


Figure 2-4

[For a complete list of new features & updates, please see the MDAemon release notes.](#)